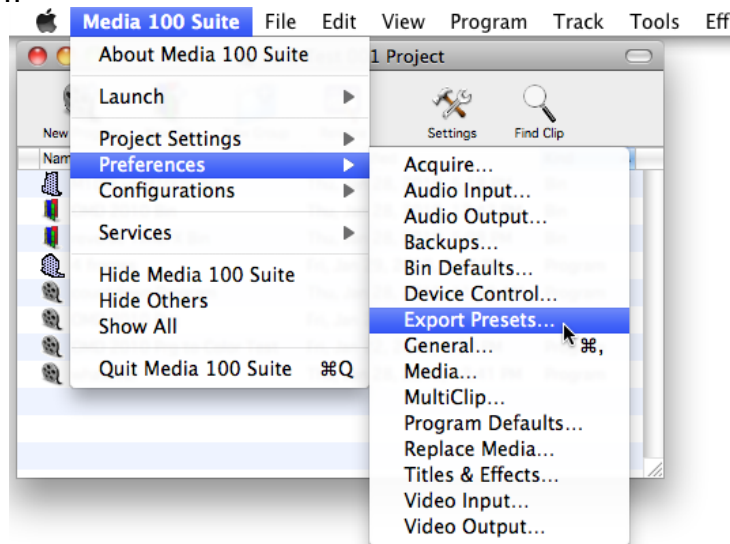


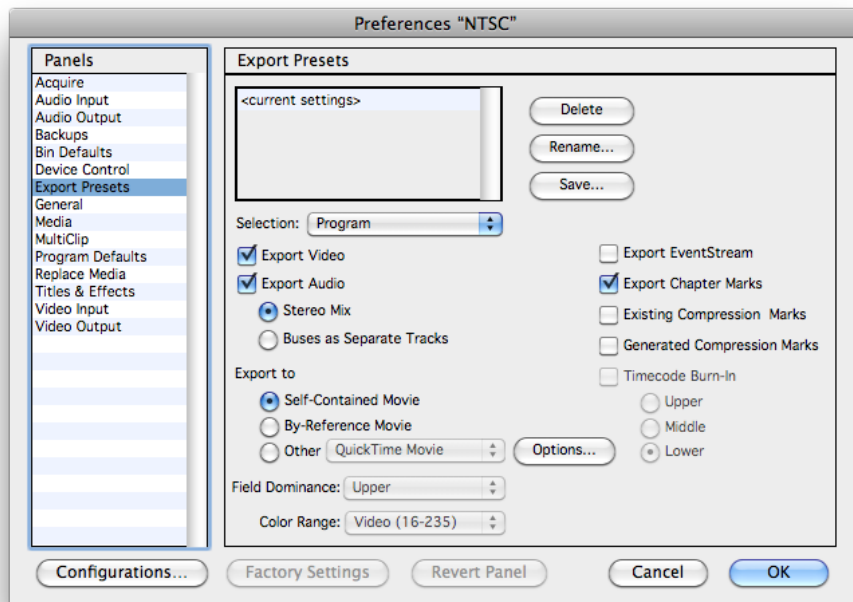
## Export Presets

Export Presets provide you with a way to easily recall specific export settings from a drop-down menu in the Export dialog when exporting Programs.

To create an Export Preset, go to the "Media 100 Suite" menu and choose "Preferences > Export Presets..."

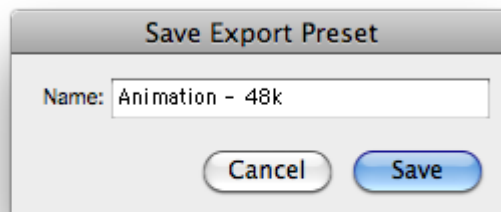


This will open the "Export Presets" Preferences Pane.

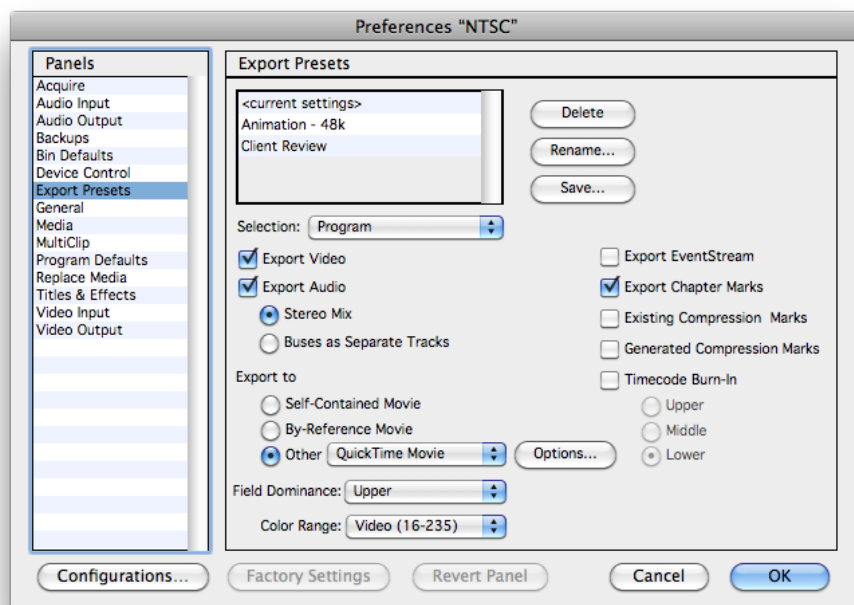


The bottom half of the window looks just like the "Export" dialog. Here you can customize settings then click the "Save..." button.

This will bring up the "Save Export Preset" dialog.

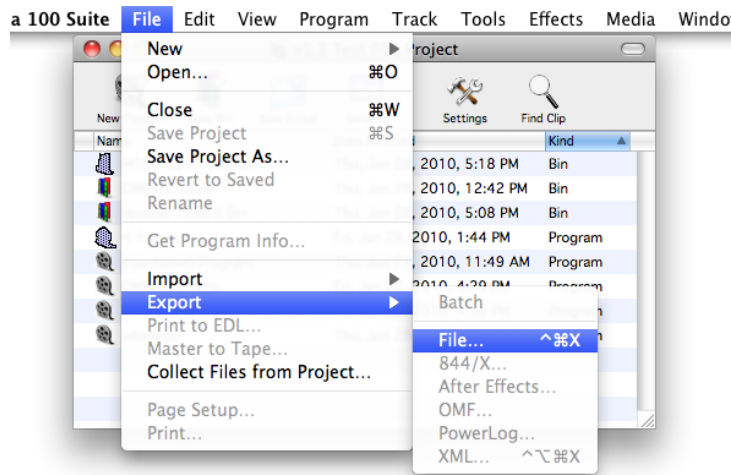


As you create new presets, give each one a discrete name and click "Save". The settings names will appear in the "Export Presets" Preferences Pane.

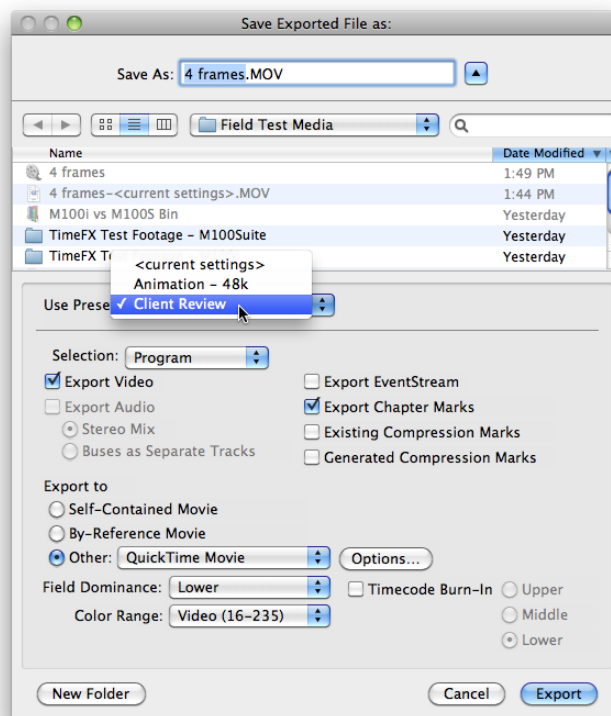


When you are finished creating presets, Click "OK".

To use an Export Preset, first ensure that the Program you want to export is open and the active window then go to "File > Export > File..."



Name your export and choose the destination for the exported file then choose the preset you wish to use from the "Use Preset" drop-down menu and click "Export".



The file will be exported to disk and the Export dialog will close.