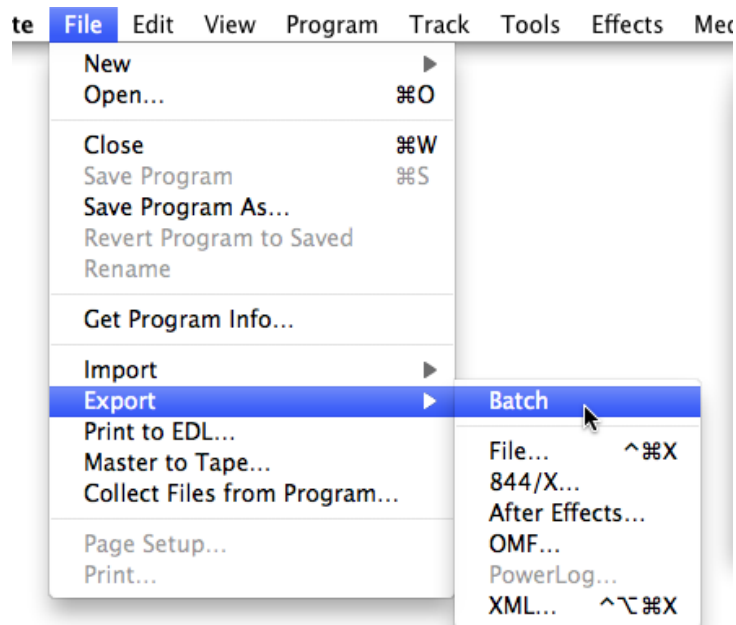


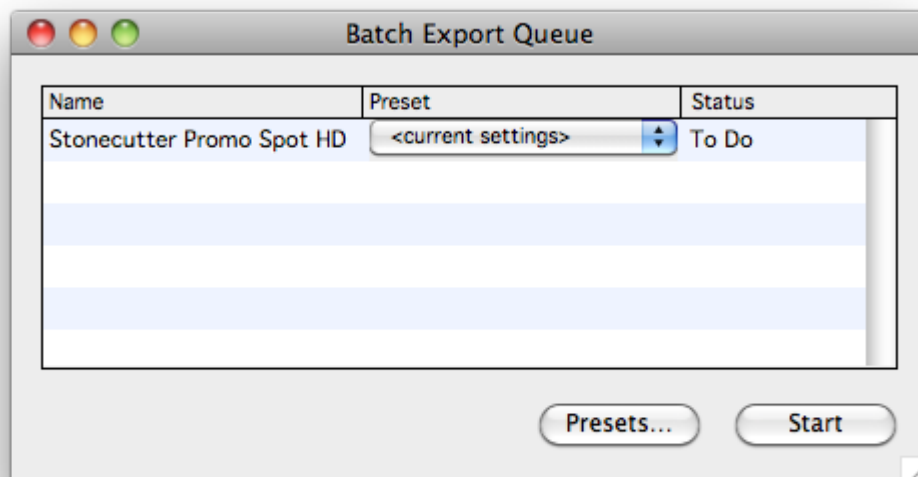
Batch Export Queue

Batch Export provides a way to either apply multiple Export Presets to the same Program or queue up several different Programs for export in one session.

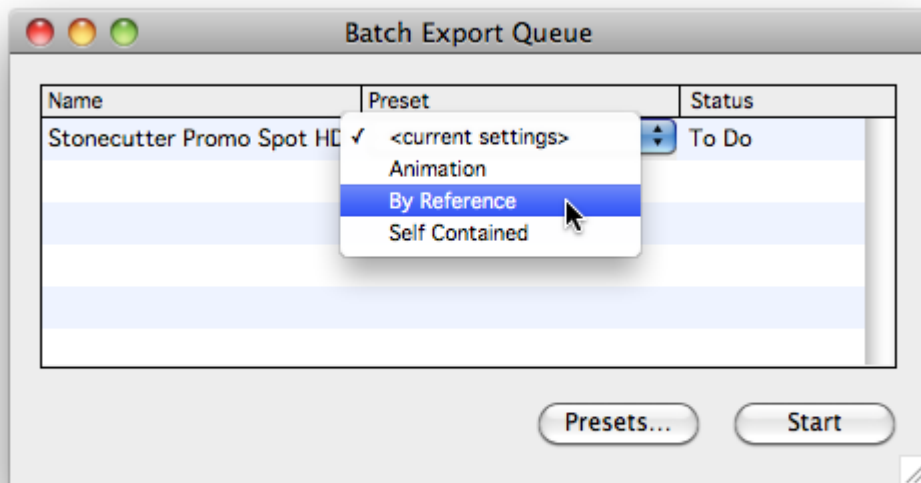
With a Program you want to export as the active window, go to File > Export > Batch.



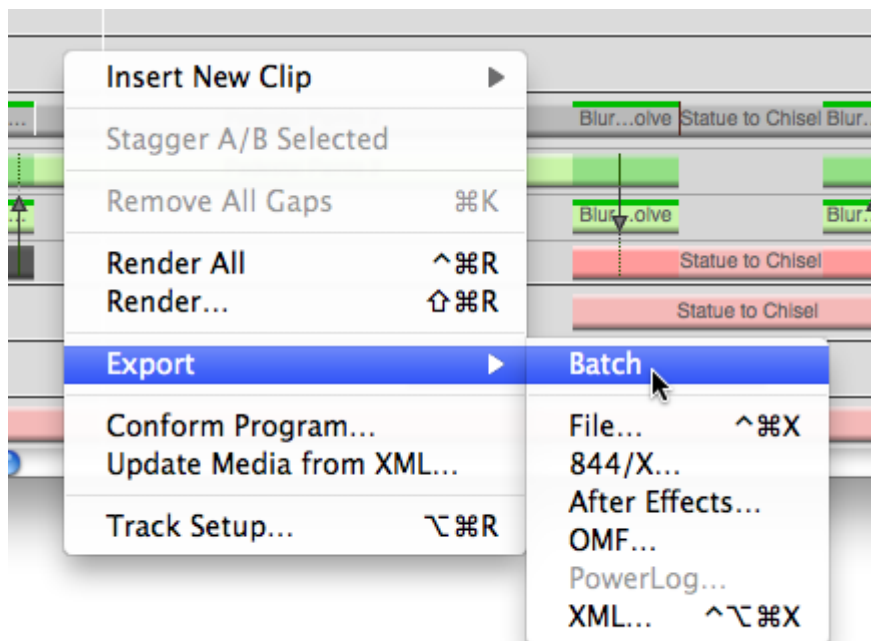
This will open the "Batch Export Queue".



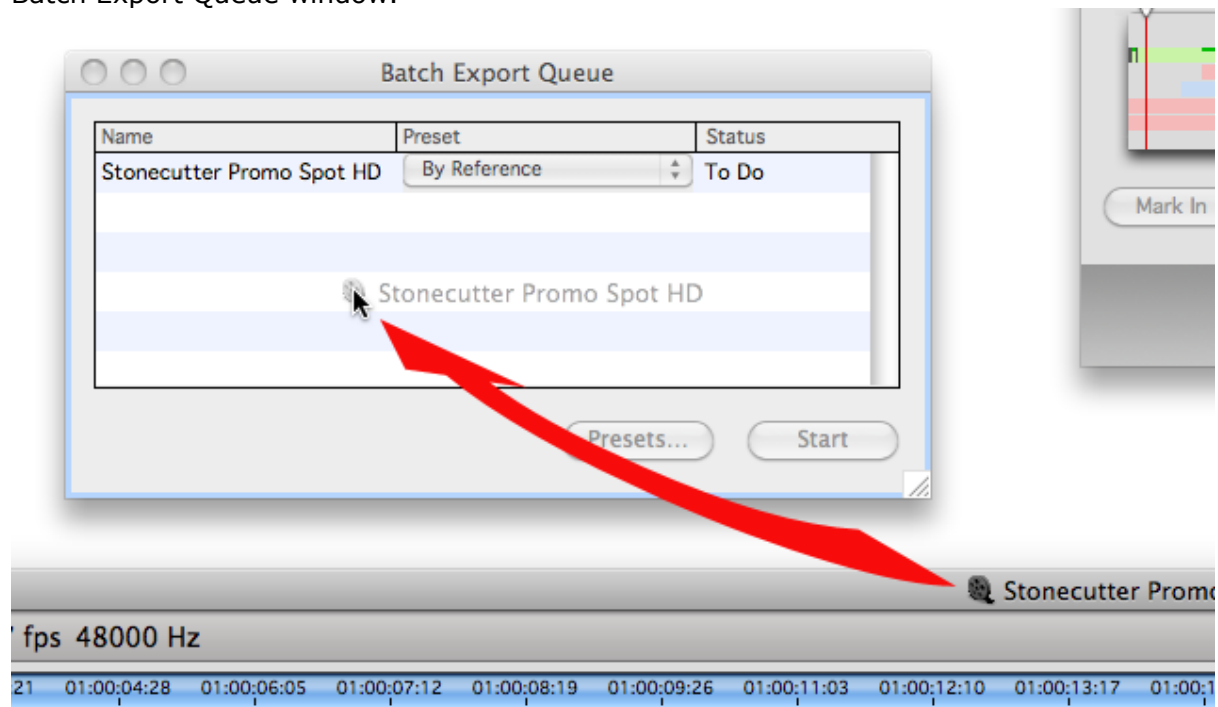
Presets already saved can be chosen from the drop-down in the "Preset" column.



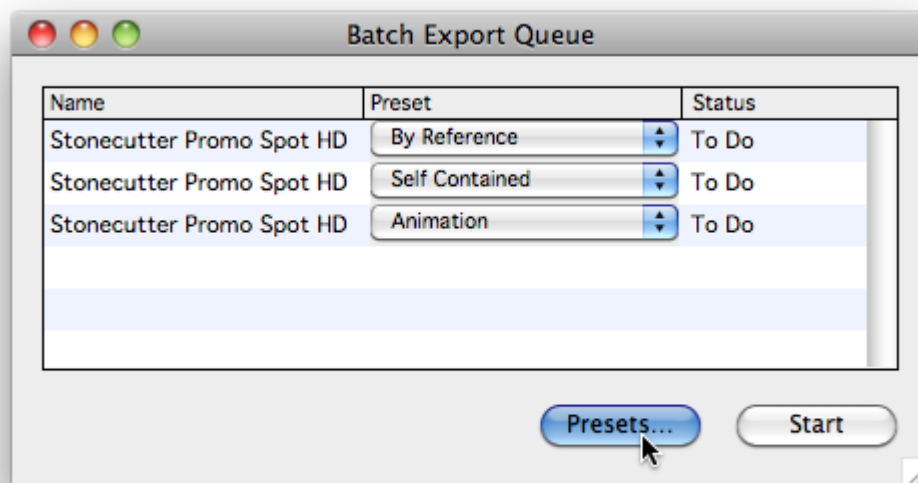
Programs can also be added to the queue either by right-clicking in the Program and choosing "Export > Batch"...



...and by dragging the Program icon from the title bar of the Program window to the Batch Export Queue window.

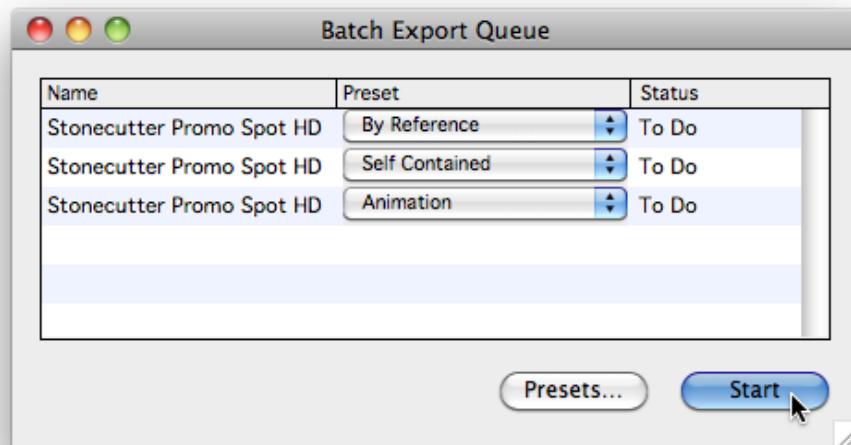


If you find that you do not have a preset that you need, you can click the "Presets..." button to go to the "Export Presets" Preference Panel.

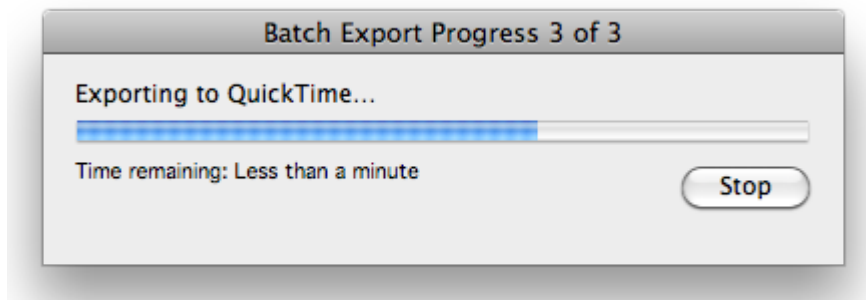


There, Export Presets can be created and saved as outlined in the "Export Presets" guide.

When you are ready to start the Batch Export, click the "Start" button.



After choosing a destination for the files and continuing, a progress bar will update the progress of the exports...



and the items in the queue will be marked as "Done" as they are completed.

