

Boris Final Effects Complete™ AVX Version 4.02

Release Notes

Introduction	2
Supported Hosts	2
Minimum System Memory Requirements	2
Supported Operating Systems	2
Purchasing Final Effects AVX Complete Via a Trial Version	2
Installing Final Effects Complete from a CD-ROM	4
Supported Filters	5
Known Limitations	6
Registration	7
Contacting Technical Support	7



FINAL EFFECTS COMPLETE AVX

Copyright © 2005 Boris FX, Inc. All rights reserved.

Introduction

Welcome to Boris Final Effects Complete AVX version 4.0. FEC AVX includes over 100 powerful plug-in filters for Avid systems. To view examples of each effect, please visit the Boris website at www.borisfx.com/FEC/gallery/.

These Release Notes contain important information regarding supported system requirements, new features, fixed bugs, and known limitations, as well as information on installing Boris Final Effects Complete 4.0. For information about Boris Final Effects Complete software updates, other Boris products, and additional resources, visit our website at www.borisfx.com.

Compatibility with Older Versions of ICEfx

Final Effects Complete AVX was formerly known as ICEfx. Version 4.0 provides these ICE hardware-accelerated effects as a software-only solution. FEC AVX is not compatible with the older ICE versions that ran on the AVX architecture.

Supported Hosts

Boris Final Effects Complete 4.0 supports all Avid systems running on the AVX 1.0 architecture, including Avid DS systems. Avid® Visual Extensions (AVX™) is a plug-in architecture that dynamically extends the effects supported by Avid systems. The initial release is for Windows only. A future release will add Macintosh support.

Minimum System Memory Requirements

The following requirements are recommended for both Windows users.

- Minimum 512 MB (assigned to Avid host application)
- Recommended 512 MB (assigned to host application)

Supported Operating Systems

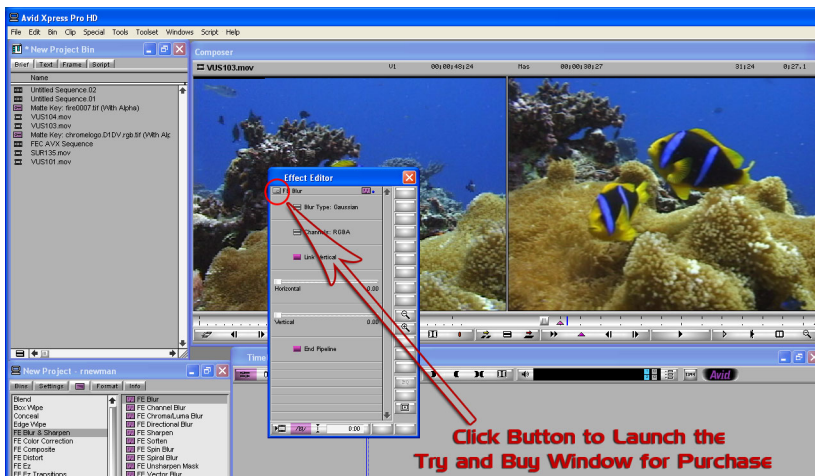
The initial release is for Windows only. A future release will add Macintosh support. Boris Final Effects Complete 4.0 supports the following operating systems:

- Microsoft® Windows® 2000 and Windows XP®

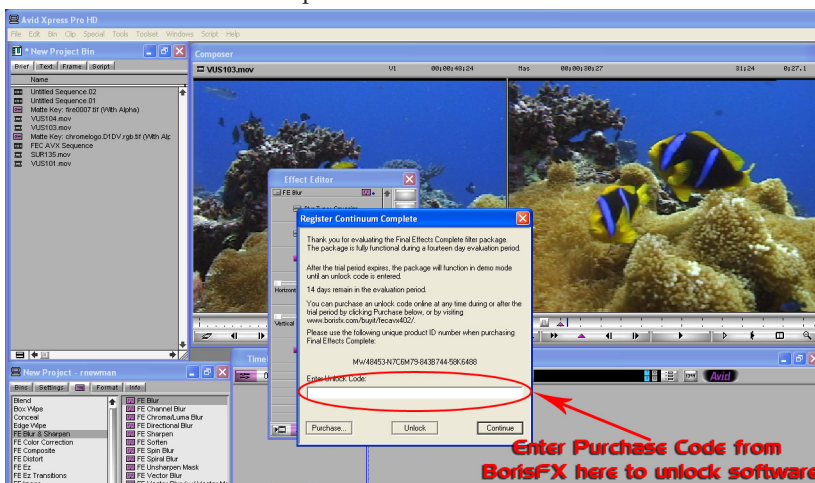
Purchasing Final Effects AVX Complete Via a Trial Version

The following section details the method for registering and purchasing FEC AVX via a Trial version downloaded from the Boris FX website.

1. Launch your Avid system and apply a Final Effects Complete AVX filter to a clip.
2. Enter Effects mode.
3. In the Effect Editor window, click the **About** button to the left of the filter name to access the registration dialog.



4. Click the **Purchase** button to purchase an Unlock Code.



Installing Final Effects Complete from a CD-ROM

The following instructions detail how to install Final Effects Complete via a CD.

1. Quit all applications.
2. To correctly install Boris Final Effects Complete AVX, you must log on to your system as an Administrator.
3. Insert the Boris CD into the system's CD-ROM drive. The Boris Final Effects Complete AVX installer automatically launches.



NOTE: If after at least 15 seconds the Welcome window does not appear, double-click "setup.exe" located within the "install" directory found at the root of the Boris CD.

4. Choose the language for installation from the choices in the menu. Click **OK**.
5. The Boris Setup License Agreement appears. Click to accept the terms of the license agreement. Then click **Next**.
6. Enter your User Name, Company Name and Serial Number in the Customer Information screen. Include the hyphens when you enter the serial number. The product serial number is found inside the front cover of your CD case. Click **OK**.
7. In the Select Features screen, select the hosts you want to install FEC 4.0. To install into multiple hosts, click all hosts that apply.
8. Click **Next**.
9. In the next window, click **Install** to begin the installation. The installer will search for your host(s) on the system and install FEC 4.0 inside your host(s).
10. A Plugin Destination window appears telling you the path FEC 4.0 plug-ins will be installed for each host you are installing into. Click **Next**.
11. A dialog appears allowing you to register your copy of FEC 4.0. Follow the onscreen instructions to register your copy. Click **Finish**.

Supported Filters

The following table describes the filters that are included with Final Effects Complete. Not all filters are compatible with all host applications.

The following filters are included with Final Effects Complete AVX version 4.0.

Supported FEC AVX Filters

Blur & Sharpen Effects

Blur	Channel Blur	Chroma/Luma Blur	Directional Blur
Sharpen	Soften	Spin Blur	Spiral Blur
Unsharpen Mask	Zoom Blur	Vector Blur	Vector Blur (w/Vector map)

Color Correction Effects

Brightness & Contrast	Color Balance (HLS)	Color Balance (RGB)	Color Offset
Gamma/ Pedestal/Gain	Invert	Levels	PowerRamp
Replace Color	Threshold	Threshold (RGB)	Tint

Composite Effects

Composite	Effect Key	Join	
-----------	------------	------	--

Distort Effects

Bulge	Bend It	Bender	EZ LazyWaves
EZ Ripples	Flo Motion	Griddler	Lens
Ripple Pulse	Slant	Slant Matte	Smear
Spherize	Split	Split2	Tiler
Turbulence	Twirl	WaterWaves	

EZ Effects

Channel Blur	Color Balance (HLS)	Color Balance (RGB)	Cylinder
DVE	Gamma/Ped/Gain	Gaussian Blur	Shatter

EZ Transitions Effects

Blur Transition	Directional Blur Transition	Grid Wipe Transition	Jaws Transition
Min/Max Transition	Noise Transition	Radial Scale Wipe	Scatterize Transition
Spiral Blur Transition	Twirl Transition		

Image Effects

Alpha Map	Channel Noise	Median	Min/Max
Noise	Simple Wire Removal		

Light Effects

Light Rays	Light Sweep	LightBlast	LightTornado
LightWhirl	Spotlight	Spotlight (w Gel Layer)	

Supported FEC AVX Filters

Particle Effects			
Ball Action	Bubbles	Hair	Hair (w/hairfall map)
Pixel Polly			
Perspective Effects			
Advanced 3D	Cylinder	Power Pin	Geometrics
Sphere	Sphere (w/Reflection map)	Simple Shadow	
Styleize & Synthesize Effects			
3D Relief	Blobbylize	Blobbylize (w Blob map)	Burn Film
Emboss	Fractal	Glass	Glass (w/Bump map)
Glow	Kaleida	LensStar	Mr. Smoothie
Mr. Smoothie (w/Glow Map)	Scatterize	VideoFragment	
Transitions Effects			
Grid Wipe	Image Wipe	Jaws	LightWipe
LightWipe (Two Input/Transition)	Page Turn	Page Turn (w/Flip Side)	Radial Scale Wipe
Scale Wipe	Twister	Twister (w/Flip Side)	

Known Limitations

Final Effects Complete Version AVX 4.0 includes the following known limitations:

- All filters are 8-bit only.
- The FE Split 2 and FE Alpha Map filters do not include online help files. In these two filters, clicking the **Other Options button** in the Effect Editor window launches a dialog box that includes custom controls.
- Some filters that appear in the *Transitions category* are single-input effects that cannot be applied as transitions. For example, both an **FE Twister** and an **FE Twister (w/Backside)** effect appear in the *Transitions category*. However, the FE Twister can only be applied to a clip, not to the transition between two clips. To create a Twister transition between two clips, use the **Twister (w/Backside)** effect. To create a transition using a single-input effect, you can use the **FE Join** filter to create a transition by revealing the underlying tracks in the timeline. For details, see Chapter One in your User Guide.
- Unlike the transitions in the *EZ Transitions category*, most of the effects in the *Transitions category* do not auto-animate. To create a transition that wipes away to reveal the incoming clip, you animate the **Completion** or **Transition Complete** parameter from a value of **0** at the first keyframe to a value of **100** at the last keyframe.

- Applying an FEC AVX filter to an Avid title is a destructive process that replaces the Avid title in the timeline. To edit the title as text (for example to change text characters or font), you need to reopen the original title saved in a bin. Removing an FEC AVX effect also removes the title's nested alpha channel. To remove an FEC AVX effect and preserve the title, use the Undo command instead of the **Remove Effect** button.
- Not all FEC effects apply to titles. If you try to apply an FEC effect to a title and it does not apply, an "Effect does not apply" error message displays.

Registration

Make sure to register your product in order to receive the latest technical and upgrade information.

You can register either by filling out the registration form online at:
<http://borisfx.com/support/register.html>.

We offer registered users one year of free technical support starting from the date of purchase.

Contacting Technical Support

For technical support, contact Boris Final Effects technical support specialists:

web: <http://www.borisfx.com/support/>

e-mail: support@borisfx.com

phone: 617-451-9900

fax: 617-451-9916

hours: 9am-5pm Eastern Time (United States & Canada, GMT -05:00)