

- Searching for strings that match a particular word or phrase.

Installing the Localizer

Copy and uncompress the Boris Localizer file to your system. The Localizer can reside anywhere on your drive.

The User Interface

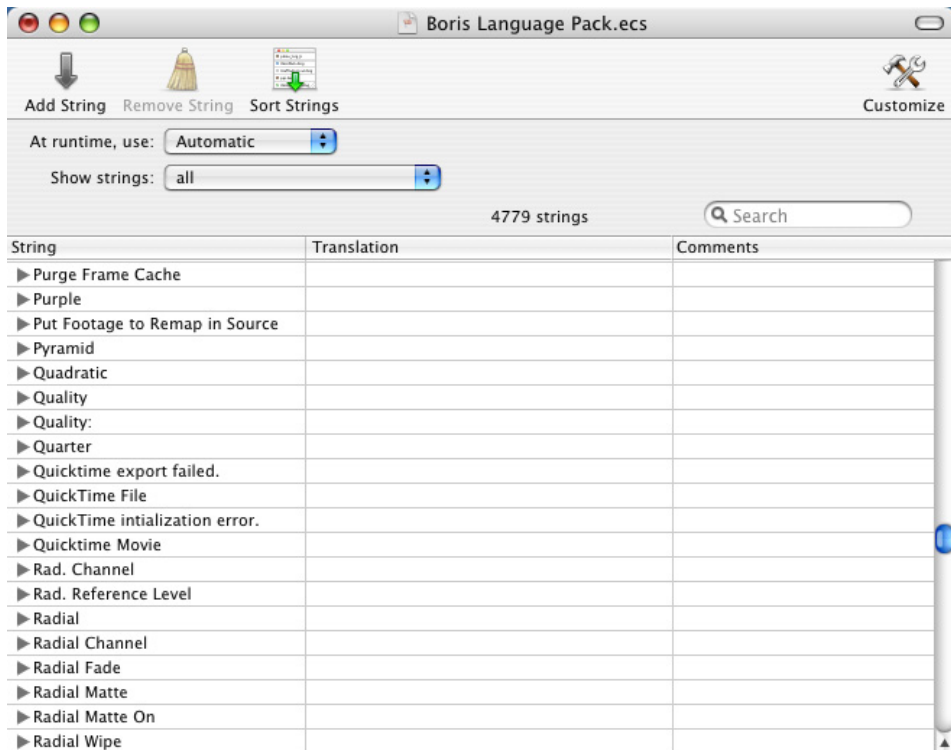
Using the commands in the Localizer is easy. This section details how to use the features found in the toolbar, and main window.

Starting the Localizer

Double-click the Boris Localizer icon to launch the Localizer. Choose File > Open and browse to the location of the Boris Language Pack.ecs file. The file is located in the following directory on a Macintosh system after you install BCC 3.01.

Library/Application Support/BorisFX/Boris Language Pack.ecs

The Boris Localizer opens the Boris Language Pack file.



Getting Started

Using the Localizer is easy. To add or change the translation for a string, locate the string in the String list. Click its disclosure triangle or double-click the string. The languages and current translations for the string display in the Translation column. Double-click the particular translation and type the new word or phrase.

In the example below, the word **Quality**, which by default has only an English translation in the Localizer, is manually translated into Italian (*Qualità*).

▼ Quality	
String Identifier	Quality
English	Quality
Japanese	質
French	Qualité
German	Qualität
Spanish	Calidad
Italian	Qualità
Chinese	质量
Korean	질

Double-click to edit the translation

When you type in a new word or phrase, all instances of that string in any BCC filter are updated. Choose File > Save to save the Language Pack file when you finish.

Using the Search feature

Use the Search feature to quickly search for a word, or part of a word that matches BCC strings. Searching makes it easy to translate all instances of a particular phrase or word.

In the example below, a search on the word *lock* is performed, displaying all of the strings that include lock.

35 strings 🔍 lock	
String	Translation
▶ Lock Bias	
▶ Lock Blend	
▶ Lock Blur	
▶ Lock Blurriness	
▶ Lock Brightness	
▶ Lock Contrast	
▶ Lock Intensity	
▶ Lock Level Count	
▶ Lock Mix	
▶ Lock Noise Ratio	

Seeing your changes

1. To see your changes inside BCC filters, relaunch the host application where you have BCC installed. BCC filters automatically translate into the language set in your operating system

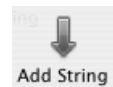


Important Note for Final Cut Pro Users: Final Cut Pro caches filters and parameters. In order to see updated Localizer changes in FCP, you may need to delete the **Final Cut Pro POA Cache** file. After using the Localizer, search for the **Final Cut Pro POA Cache** file and delete it before launching Final Cut Pro. You must delete this cache file every time between using the Localizer and relaunching Final Cut Pro.

Using The Toolbar



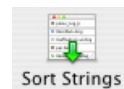
The **Add String button** allows you to add a new string to the dictionary to translate. You may need to use this feature if you run across a word or phrase in a BCC filter which is not in the Language Pack file, and you want it translated. When you add a string, it will appear at the bottom of the Strings list. Press the **Sort Strings button** to sort the Strings list in alphabetical order. By default, the new string will be translated in English and you will need to manually translate it for all of the other languages.



The **Remove String button** lets you remove a selected string, and all of its translations from the dictionary.



The **Sort Strings button** sorts all of the strings in the Language Pack file in alphabetical order.



Using the Customize Button



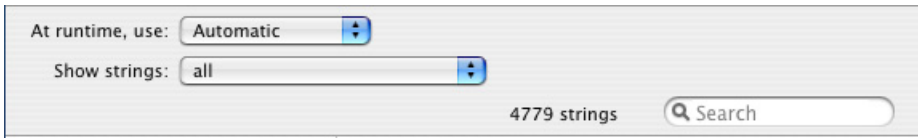
Pressing the **Customize Button** gives you access to advanced features that should only be used by engineers or as directed by Boris Technical Support. Do not use these features unless directed to by Boris Support or you may cause BCC not to recognize your Language Pack file.

Pressing the **Add Language button prompts** you to select one of the eight languages supported by the Localizer. A new translation for the given language is then added for each of the strings in the dictionary if that language was previously deleted or missing.

Pressing the **Remove Language button** prompts you to select one of the eight languages supported by the Localizer. All translations for that language are then removed from the dictionary.

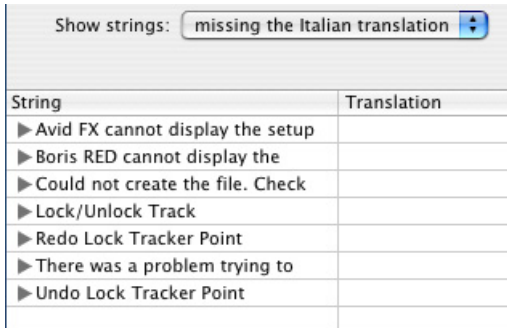
Pressing the **Merge Dictionary button** prompts you to select another dictionary file. You can then merge the translations from the selected file into the current dictionary, with the option to overwrite or keep the existing translations for those strings that appear in both dictionaries.

Using the Main Window



The **At runtime, use:** menu should be left with *Automatic* chosen. This menu allows you to select the language that will be used when you use BCC filters in your host. Automatic is the default value, and will map to whatever language the system is using. Other choices in the menu are available only for testing purposes and selecting one of the could cause your system to display garbage characters or crash.

The **Show Strings menu** filters the strings in the dictionary to display only those that are missing a translation for a given language. When *All* is selected (the default), all of the strings included in the BCC filters are displayed.



Choose strings missing the Italian translation to display only the strings that aren't translated into Italian

Type a word or phrase into the **Search field** to quickly search for a word, or part of a word that matches BCC strings. Searching makes it easy to translate all instances of a particular phrase or word.

Appendix A: Editing Language Pack Files on Windows Systems

The Boris Localizer is a Macintosh-only application. Windows users have a couple of options to edit the XML-based Boris Language Pack.ecs file on their machines.

- Editing the Language Pack file using Notepad,
- Purchasing and using a commercial XML editing application such as Altova's xmlspy. (www.altova.com).

The following steps outline both methods.

Using Notepad to edit Language Pack Files

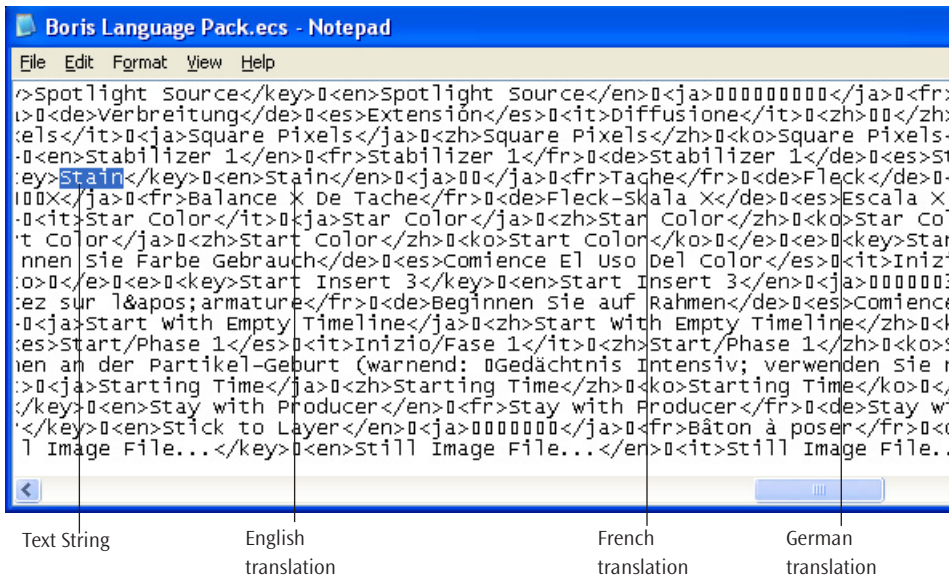
You can use the Windows Notepad application to edit the Boris Language Pack file. The process is very crude. The Language Pack file will appear as one huge block of text. Follow the steps below to use Notepad.

1. Quit out of the host application you have BCC filters installed into.
2. Locate the *Boris Language Pack.ecs* file on your system. It should be found in the following location.

<Drive>\Program Files\Boris FX, Inc.\Boris Language Pack.ecs.

If this file is not installed on your system, download it from our web site www.borissfx.com.

3. It is a good idea to duplicate this file and put a the duplicate on your system where you can find it in the event you make a mistake when you are editing the original and need to revert to the unedited version.
4. Double-click the *Boris Language Pack.ecs* file to open it. The file will not automatically open in Notepad, you will need to browse to the Notepad application and choose it in order to use Notepad to open it.



7. Translations for each of the eight supported languages are preceded and followed by a unique language code enclosed in carets. The language codes are as follows.

- <en> English
- <fr> French
- <de> German
- <it> Italian
- <ja> Japanese
- <zh> Chinese
- <ko> Korean
- <es> Spanish

In the above example, you can see that the translations for Stain are easily identified because they are preceded and followed by their unique language code.

8. Replace the translation for your language with the new word or phrase. In some instances, you will see squares instead of translation for particular languages. This means that the characters for that language are not supported on your system.



There are five unsupported characters you should not use when replacing a translation. See the section below for more information.

9. When you are finished editing the Boris Language Pack file, save the file into its default location:

<Drive>\Program Files\Boris FX, Inc.\Boris Language Pack.ecs.

