

Boris Continuum Complete 7.0.0 for Sony Vegas Install Guide

From BorisFX

Boris Continuum Complete 7 for Sony Vegas 10™ Install Guide

Introduction

Welcome to Boris Continuum Complete (BCC) version 7.0.0OFX. For more information about Boris products, or to register your copy of Boris Continuum Complete, visit our web site at http://borisfx.com/login/reg_form.php?action=register_win

This Installation Guide contains instructions for installing Boris Continuum Complete 7 for Sony Vegas 10™

Technical Support

Contact Boris technical support at: <http://www.borisfx.com/support>.

Supported Hosts

Boris Continuum Complete 7.0.0OFX supports Sony Vegas10a® (both 32bit & 64bit).

Supported Operating Systems

Boris Continuum Complete 7.0.0OFX supports the following operating systems:

Windows

Microsoft® Windows®: XP® 32bit, VISTA® 32bit, VISTA® 64bit, WIN 7® 32bit & WIN 7® 64bit.

For more details on Service Packs needed for each of the above OS' please check Sony Vegas 10 a ® documentation.

Installing BCC 7.0.0OFX for Sony Vegas® 10a

Logging On to Your System

To successfully install BCC 7.0.0OFX, you must log on as an *Administrator* or have *Administrator* (read/write) privileges.

Installing BCC 7.0.0OFX

1. Launch the Try & Buy (TNB) Installer application that you downloaded from <http://www.borisfx.com>. A splash screen appears:



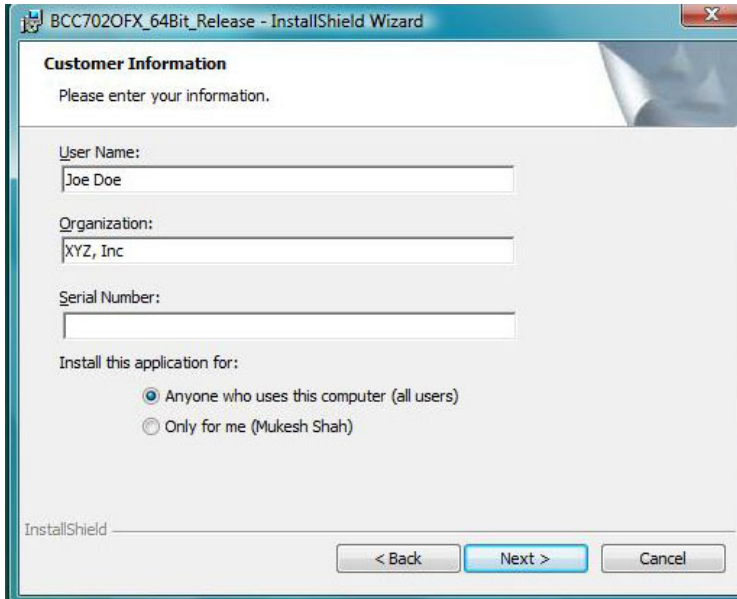
Click **Next**.

2. Read & Accept the terms in *Software License Agreement*:



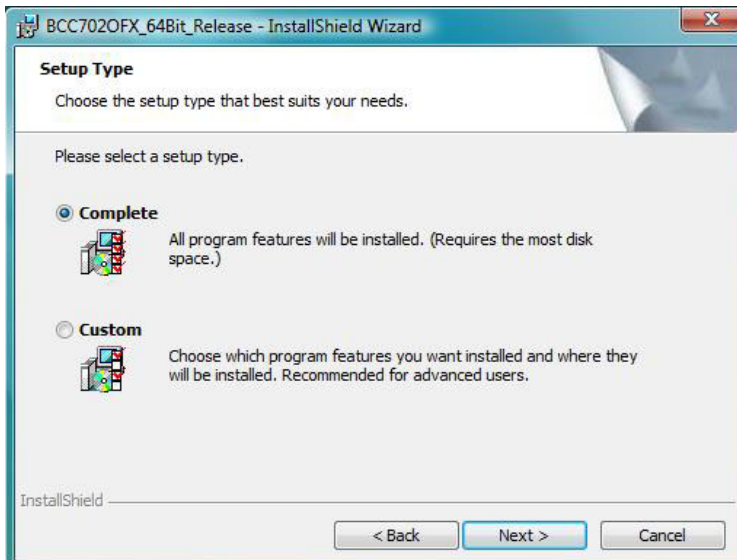
Click **Next**.

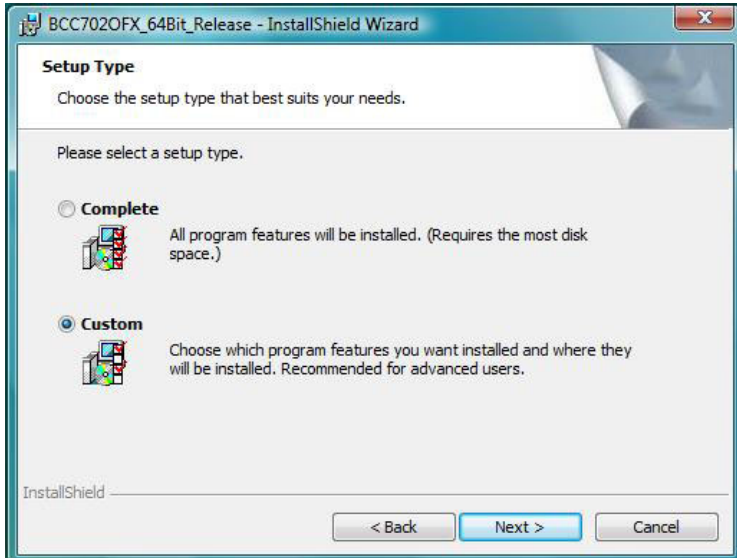
3. Enter your **Name**, **Organization** and **Serial Number** in the Customer Information dialog box. Include the hyphens when you enter the serial number. You can **Copy/Paste** the serial number as well (Ctrl/V only for pasting since mouse right clicking to Paste will not work). The product serial number is e-mailed to you when the TNB is downloaded from <http://www.borisfx.com>:



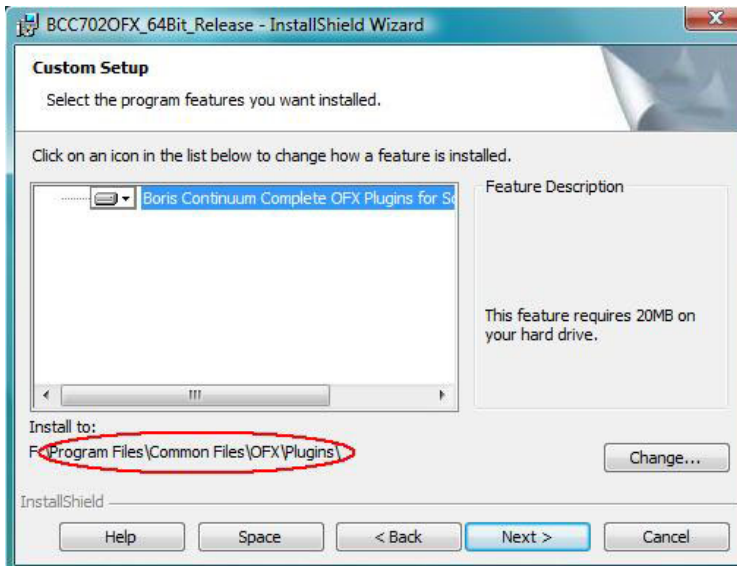
Click **Next**.

4. Select either **Complete** to install the files in the Default folders & locations & then click **Next** or select **Custom** to install the files in different folders & locations by changing the Path:





BCC OFX plugs need to go into the **OFX** folder inside **Program Files/Common Files** folder. If an **OFX** folder is not present then a new one is automatically created when **Complete** is selected as an install option:



5. Click **Install**.

6. Click **Finish**.