

BCC Twirl Filter

The BCC Twirl filter spins the image around a center point, creating a spiral of distortion.



Source image



Filtered image

Selecting the **Process Alpha Only** checkbox allows you to distort the alpha channel without changing the underlying colors.

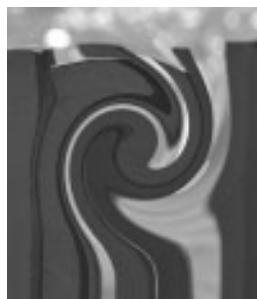
Twirl Center sets the center of the twirl effect along the X and Y axis.

The **Twirl Style** menu adjusts the shape of the twirl effect. Each style uses the **Twirl Angle** and **Twirl Radius** parameters slightly differently.

- **Linear** displaces pixels to the specified Twirl Angle at the Twirl Center point. The displacement of the pixels decreases evenly as their distance from the center decreases, and pixels are not displaced at all beyond the Twirl Radius.
- **Wide** is similar to Linear, but applies more displacement to pixels near the Twirl Radius. This creates a wider twirl.
- **Narrow** is similar to Linear but applies more displacement to pixels near the Twirl Center point. This creates a narrower twirl.
- **Two Way** begins displacing pixels outside the Twirl Radius in the direction of the Twirl Angle. As the distance to the center of the effect decreases, the displacement increases until the Twirl Radius is reached. At the Twirl Radius, pixels are displaced fully in the Twirl Angle direction. Between the Twirl Radius and the Twirl Center, pixels are displaced increasingly in the direction opposite the Twirl Angle. At the Twirl Center point, pixels are displaced fully to the opposite of the Twirl Angle.



Twirl Style=Linear



Twirl Style=Narrow

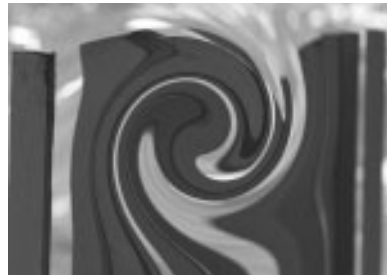


Twirl Style=Two Way

Outside Soften softens the transition between the twirl and the undistorted region.



Outside Softness=0



Outside Softness=50

Inset changes the radius value at which the twirl achieves its maximum displacement. Increasing positive values move the peak displacement area away from the center of the twirl, which can create an undistorted region in the center. Negative values create effects similar to those produced by reducing the Twirl Angle value.



Inset=-100



Inset=0



Inset=100

If **Inset** is greater than 0, **Inside Falloff** controls the length or the transition between fully displaced pixels in the twirl and the unaffected pixels. If the **Inset** value is greater than the **Inside Falloff** value, an undistorted region in the center of the effect is created. If **Inset** is 0 or a negative value, **Inside Falloff** has no affect.



Inside Falloff=0

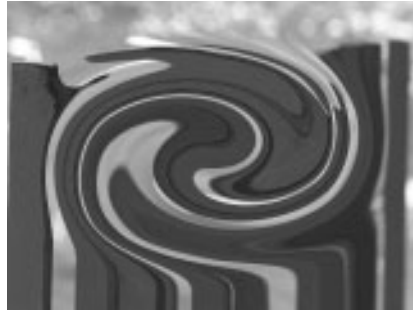


Inside Falloff=25



Inside Falloff=50

Aspect stretches the Twirl. Positive values stretch the twirl horizontally, while negative values stretch the twirl vertically.



Aspect=5



Aspect=-5

Motion Tracker Parameter Group

The Motion Tracker parameter group allows you to track the motion of an object, then use the motion path data to control another aspect of the effect. The parameters that can be affected depend upon the filter. For example, apply the Colorize filter and use the Motion Tracker parameters to track a logo on a t-shirt. Apply the Colorize effect to the logo in an oval area using the PixelChooser's Distance to Point choice. For more information, see Chapter 1 in the User Guide.

The PixelChooser Parameter Group

The PixelChooser is included in many Boris filters and provides several methods to selectively filter an image.



For more information on the PixelChooser, see Chapter 10, "The PixelChooser" in the User Guide, or open the help file for the standalone PixelChooser filter.

The Pinning Parameter Group



The Pinning parameters are described in the User Guide.